

Please check the examination details below before entering your candidate information

Candidate surname

Other names

Pearson Edexcel
GCSE (9–1)

Centre Number

--	--	--	--	--

Candidate Number

--	--	--	--	--

Monday 1 June 2020

Morning (Time: 1 hour 15 minutes)

Paper Reference **1HI0/10**

History

Paper 1: Thematic study and historic environment

**Option 10: Crime and punishment in Britain,
c1000–present *and* Whitechapel, c1870–c1900:
crime, policing and the inner city**

You must have:

Sources Booklet (enclosed)

Total Marks

Instructions

- Use **black** ink or ball-point pen.
- **Fill in the boxes** at the top of this page with your name, centre number and candidate number.
- There are two sections in this question paper. Answer Questions 1 and 2 from Section A. From Section B, answer Questions 3 and 4 and then **EITHER** Question 5 **OR** Question 6.
- Answer the questions in the spaces provided
– *there may be more space than you need.*

Information

- The total mark for this paper is 52.
- The marks for **each** question are shown in brackets
– *use this as a guide as to how much time to spend on each question.*
- The marks available for spelling, punctuation, grammar and use of specialist terminology are clearly indicated.

Advice

- Read each question carefully before you start to answer it.
- Check your answers if you have time at the end.

Turn over ►

P62451A

©2020 Pearson Education Ltd.

1/1/1/1/1



Pearson

SECTION A: Whitechapel, c1870–c1900: crime, policing and the inner city

Answer Questions 1 and 2.

- 1** Describe **two** features of the way the Peabody Estate helped to improve housing in the Whitechapel area.

Feature 1

.....

.....

.....

.....

.....

.....

Feature 2

.....

.....

.....

.....

.....

.....

(Total for Question 1 = 4 marks)

DO NOT WRITE IN THIS AREA

DO NOT WRITE IN THIS AREA

DO NOT WRITE IN THIS AREA



DO NOT WRITE IN THIS AREA

DO NOT WRITE IN THIS AREA

DO NOT WRITE IN THIS AREA

2 (a) Study Sources A and B in the Sources Booklet.

How useful are Sources A and B for an enquiry into the difficulties of policing the Whitechapel area, c1870–c1900?

Explain your answer, using Sources A and B and your knowledge of the historical context.

(8)

Dotted lines for writing the answer.



DO NOT WRITE IN THIS AREA

DO NOT WRITE IN THIS AREA

DO NOT WRITE IN THIS AREA

Handwriting practice area with 20 horizontal dotted lines.



DO NOT WRITE IN THIS AREA

(b) Study Source A.

How could you follow up Source A to find out more about the difficulties of policing the Whitechapel area, c1870–c1900?

In your answer, you must give the question you would ask and the type of source you could use.

Complete the table below.

(4)

Detail in Source A that I would follow up:

.....
.....
.....
.....

Question I would ask:

.....
.....
.....
.....

What type of source I could use:

.....
.....
.....
.....

How this might help answer my question:

.....
.....
.....
.....

(Total for Question 2 = 12 marks)

TOTAL FOR SECTION A = 16 MARKS



SECTION B: Crime and punishment in Britain, c1000–present

Answer Questions 3 and 4. Then answer EITHER Question 5 OR Question 6.

- 3** Explain **one** way in which the role of local communities in law enforcement in the medieval period was similar to the role of local communities in law enforcement in the modern period.

.....

.....

.....

.....

.....

.....

.....

.....

.....

.....

.....

.....

.....

.....

.....

.....

.....

.....

.....

.....

.....

.....

.....

(Total for Question 3 = 4 marks)

DO NOT WRITE IN THIS AREA

DO NOT WRITE IN THIS AREA

DO NOT WRITE IN THIS AREA



DO NOT WRITE IN THIS AREA

DO NOT WRITE IN THIS AREA

DO NOT WRITE IN THIS AREA

4 Explain why there were changes in the way that religion affected law enforcement in the years c1000–c1700.

(12)

You may use the following in your answer:

- trial by ordeal
- accusations of witchcraft

You **must** also use information of your own.

Area with horizontal dotted lines for writing the answer.



DO NOT WRITE IN THIS AREA

DO NOT WRITE IN THIS AREA

DO NOT WRITE IN THIS AREA

Handwriting practice area with 20 horizontal dotted lines.



DO NOT WRITE IN THIS AREA

DO NOT WRITE IN THIS AREA

DO NOT WRITE IN THIS AREA

(Total for Question 4 = 12 marks)



Answer EITHER Question 5 OR Question 6.

Spelling, punctuation, grammar and use of specialist terminology will be assessed in this question.

EITHER

- 5** 'The attitude of the authorities was the main reason for changes in the use of the death penalty in the period c1700–present.'

How far do you agree? Explain your answer.

(16)

You may use the following in your answer:

- public executions
- Derek Bentley

You **must** also use information of your own.

(Total for spelling, punctuation, grammar and use of specialist terminology = 4 marks)

(Total for Question 5 = 20 marks)

OR

- 6** 'Specialisation has been the most significant development in the nature of police work in the years since the creation of the Metropolitan Police (1829).'

How far do you agree? Explain your answer.

(16)

You may use the following in your answer:

- Criminal Investigation Department (CID)
- radios

You **must** also use information of your own.

(Total for spelling, punctuation, grammar and use of specialist terminology = 4 marks)

(Total for Question 6 = 20 marks)

DO NOT WRITE IN THIS AREA

DO NOT WRITE IN THIS AREA

DO NOT WRITE IN THIS AREA



DO NOT WRITE IN THIS AREA

DO NOT WRITE IN THIS AREA

DO NOT WRITE IN THIS AREA

Indicate which question you are answering by marking a cross in the box ☒. If you change your mind, put a line through the box ☒ and then indicate your new answer with a cross ☒.

Chosen question number: **Question 5** **Question 6**

Area with horizontal dotted lines for writing answers.



DO NOT WRITE IN THIS AREA

DO NOT WRITE IN THIS AREA

DO NOT WRITE IN THIS AREA

Handwriting practice area with 20 horizontal dotted lines.



DO NOT WRITE IN THIS AREA

DO NOT WRITE IN THIS AREA

DO NOT WRITE IN THIS AREA

Handwriting practice area with 20 horizontal dotted lines.



DO NOT WRITE IN THIS AREA

DO NOT WRITE IN THIS AREA

DO NOT WRITE IN THIS AREA

TOTAL FOR SECTION B = 36 MARKS
TOTAL FOR PAPER = 52 MARKS



DO NOT WRITE IN THIS AREA

DO NOT WRITE IN THIS AREA

DO NOT WRITE IN THIS AREA

BLANK PAGE



DO NOT WRITE IN THIS AREA

DO NOT WRITE IN THIS AREA

DO NOT WRITE IN THIS AREA

BLANK PAGE



Pearson Edexcel GCSE (9–1)

Monday 1 June 2020

Morning (Time: 1 hour 15 minutes)

Paper Reference **1HI0/10**

History

Paper 1: Thematic study and historic environment

**Option 10: Crime and punishment in Britain,
c1000–present *and* Whitechapel, c1870–c1900:
crime, policing and the inner city**

Sources Booklet

Do not return this booklet with the question paper.

Turn over ►

P62451A

©2020 Pearson Education Ltd.

1/1/1/1/1



Pearson

Sources for use with Section A.

Source A: From a report in the *East London Observer* newspaper, June 1888. The newspaper published a weekly account of trials held in the local court.

Throwing stones at a Police Constable

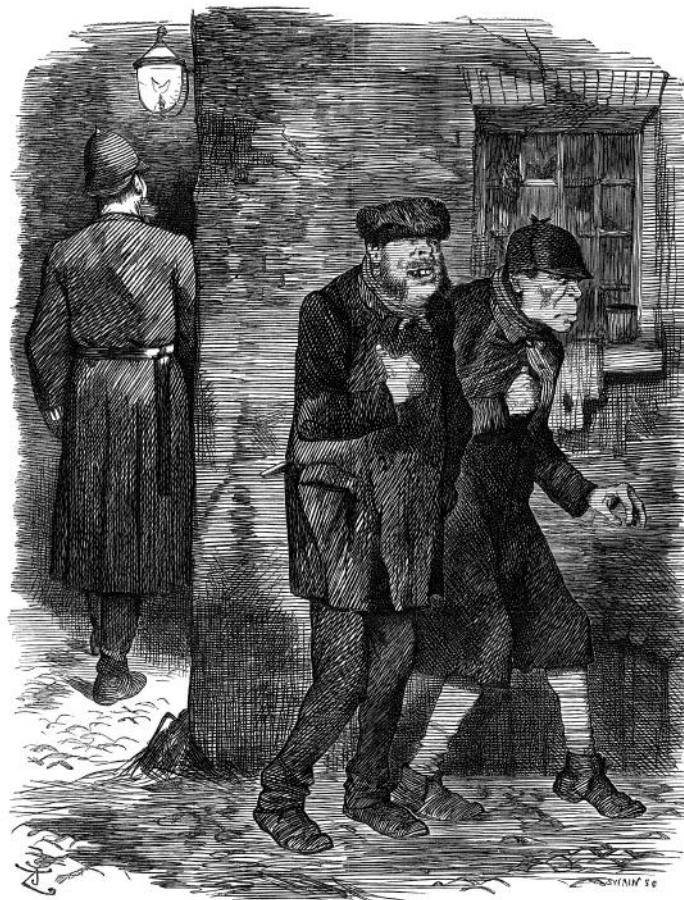
John Canavan, aged 20, was charged with being drunk and disorderly and also assaulting a policeman. On Sunday night, Canavan, who was drunk, was with some others and they were singing a rude song.

When the Police Constable tried to arrest Canavan for being drunk and disorderly, Canavan hit the Police Constable and pulled himself free from the constable's grip. Canavan and seventeen others then proceeded to throw stones at the constable, who was on his own.

The men ran away when another Police Constable arrived but Canavan was caught.

He was found guilty of all the charges and was sentenced to pay a fine of a week's wages or do a month's hard labour in prison.

Source B: A cartoon published in *Punch* magazine, 1888. The cartoon had a caption at the bottom giving details of the conversation between the two criminals in the drawing. The criminals agreed that the police were a 'Fine body of men' but they also agreed that, luckily for the two of them, there were very few policemen in Whitechapel.



WHITECHAPEL, 1888.

BLANK PAGE

Acknowledgements

Source A taken from 'Original East End', William J Fishman, Five Leaves Publications, 2005; Source B taken from © Punch Limited. First published caption showed the first criminal saying that the police force was a fine body of men. The second criminal replied that the police were very fine and the criminals were lucky that there were so few policemen.

Every effort has been made to contact copyright holders to obtain their permission for the use of copyright material. Pearson Education Ltd will, if notified, be happy to rectify any errors or omissions and include any such rectifications in future editions.