

A-level GEOGRAPHY

Paper 1 Physical Geography

Insert

This insert contains:

- Figure 1 for use with Question 1
- Figure 2 for use with Question 1
- Figures 3a and 3b for use with Question 2
- Figure 5 for use with Question 3
- Figure 7 for use with Question 4
- Figures 9a–9d for use with Question 5
- Figure 10 for use with Question 5
- Figures 11 for use with Question 6
- Figures 12 for use with Question 6

Figure 1

The impact of different rates of deforestation and afforestation upon land surface temperature (LST) at different latitudes. The data was collected between 2000 and 2011.

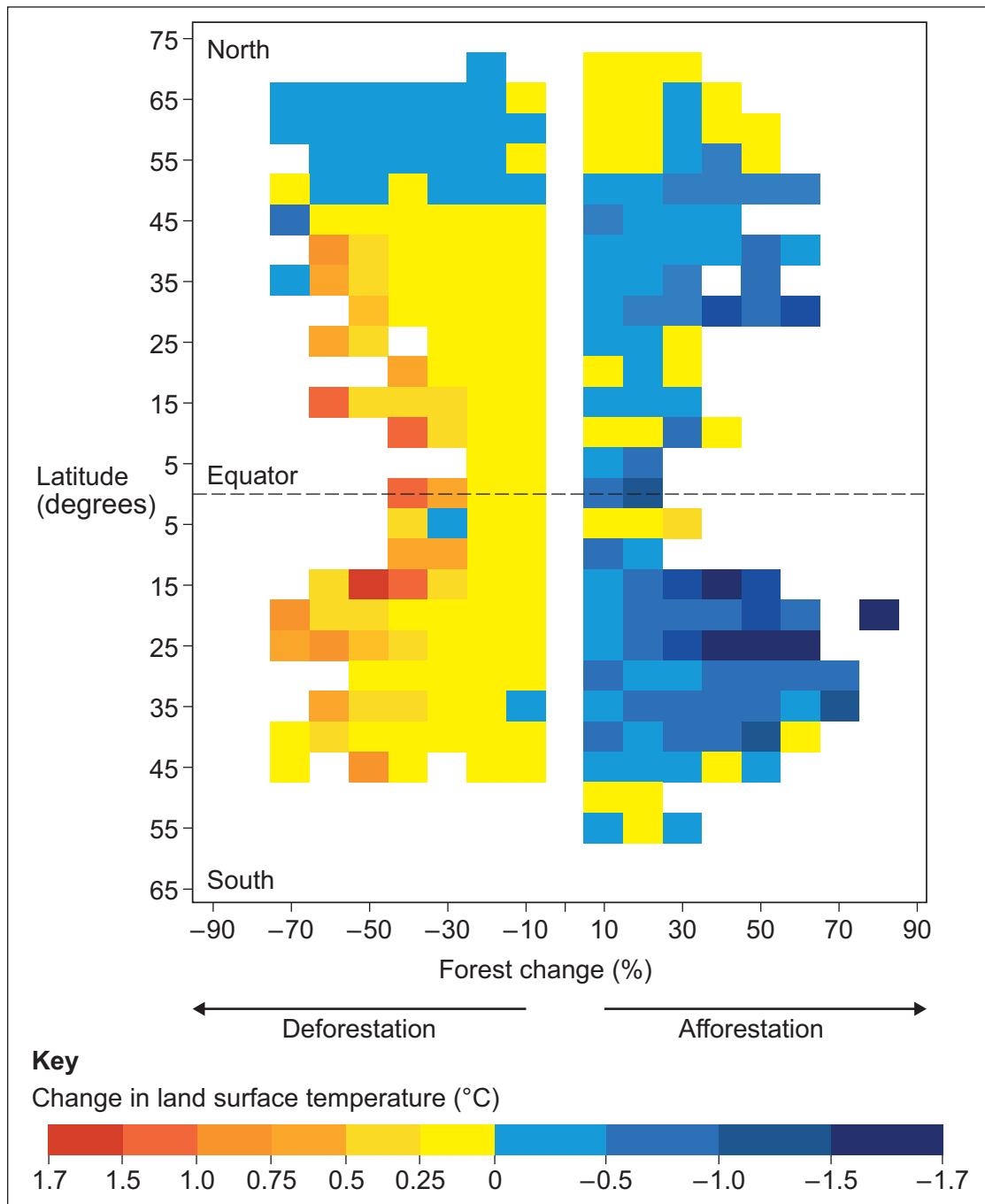



Figure 2**A simplified version of Europe's forest carbon cycle**

Infographic Europe's forest carbon cycle
cannot be reproduced here due to third-party copyright restrictions.

Note 1: Between 1990–2005, Europe's 1.5 million square kilometres of forests acted as a carbon sink absorbing about 120 teragrams of carbon more each year than they released, or 10% of the continent's fossil-fuel emissions.

Note 2: A teragram (Tg) is equal to one billion kilograms.

Turn over ►

Figure 3a – average total rainfall (1979–2009) between November and April measured at multiple recording stations across Saudi Arabia

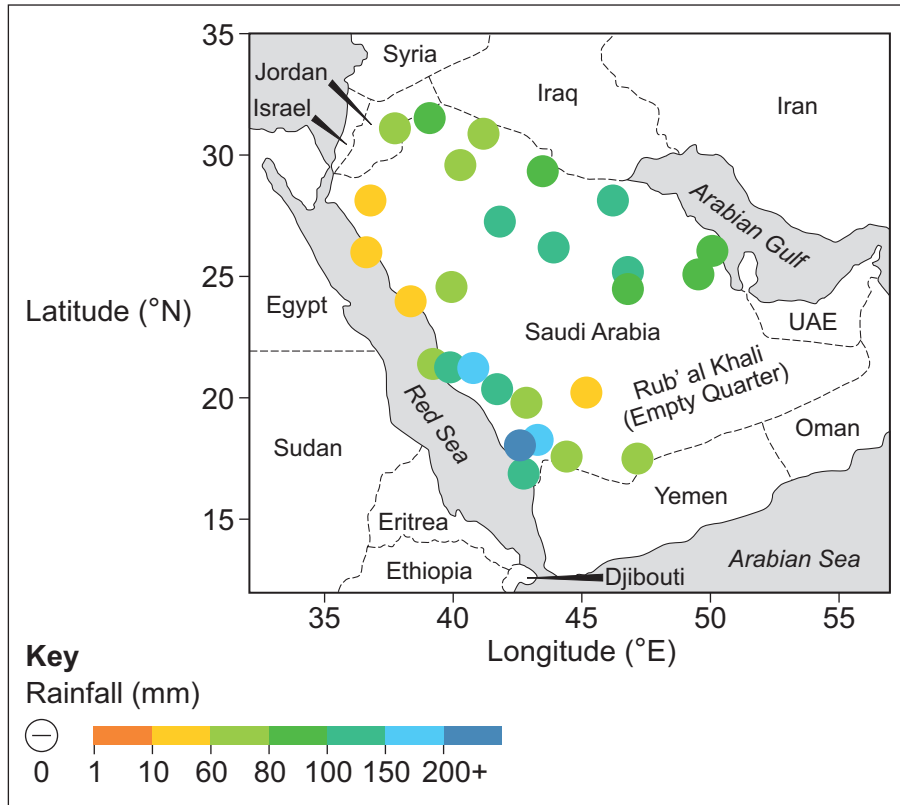
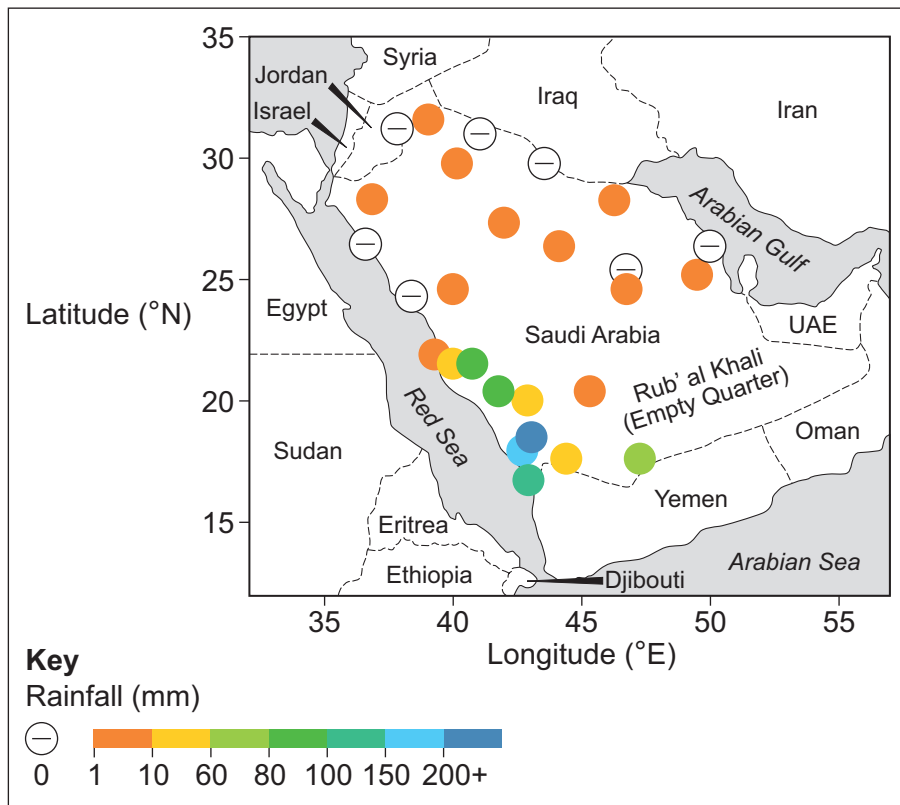


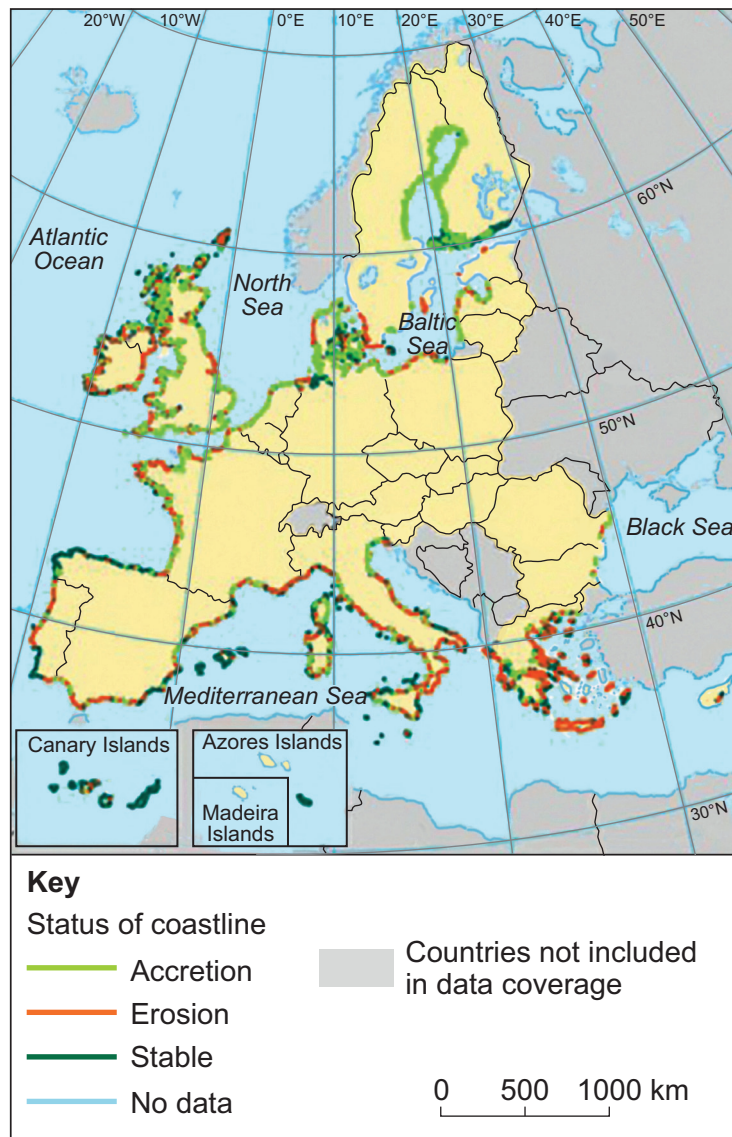
Figure 3b – average total rainfall (1979–2009) between June and September measured at multiple recording stations across Saudi Arabia



Note: The wet season runs from November to April and the dry season runs from June to September.

Figure 5

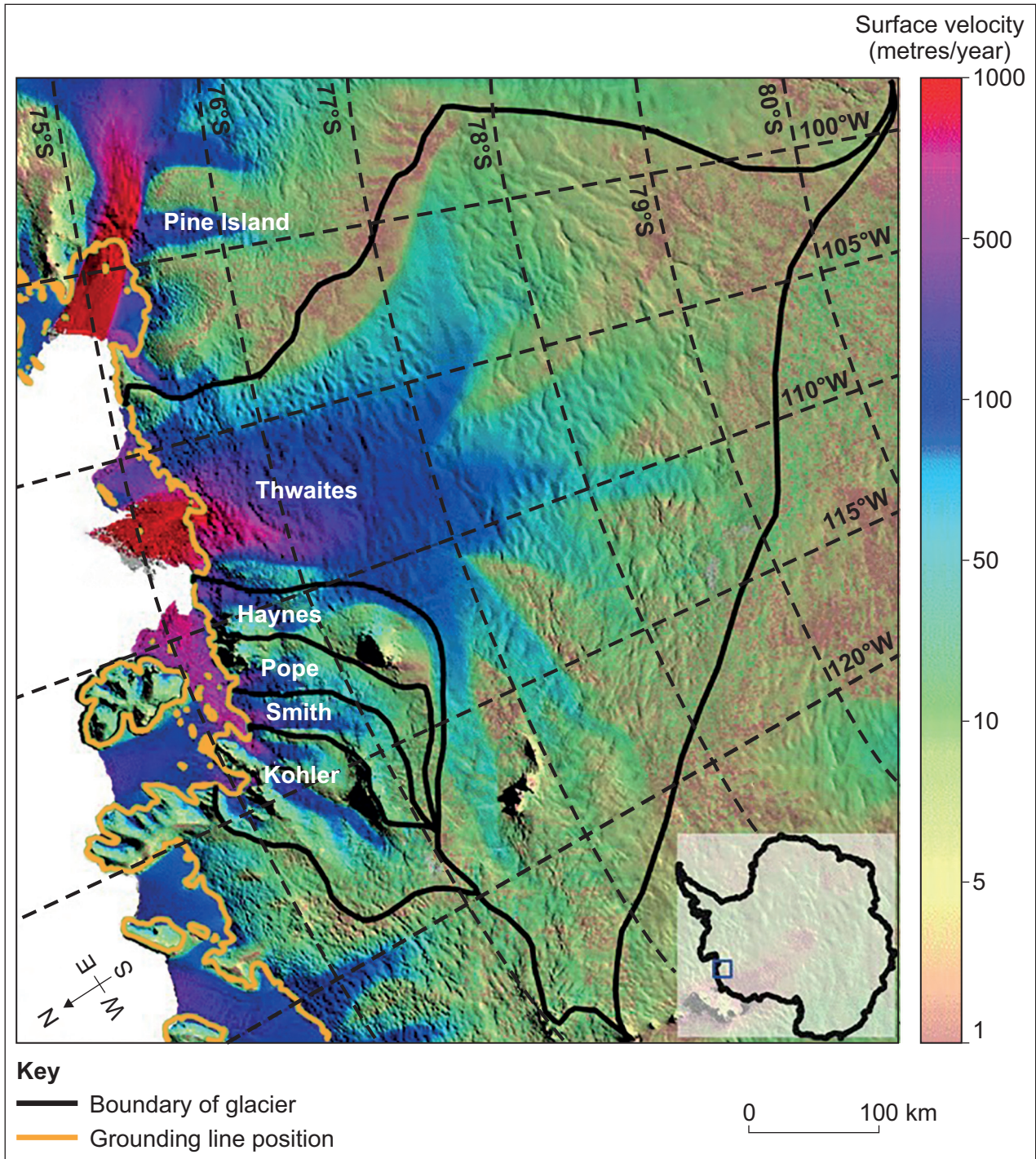
The distribution of coastal erosion and accretion (sediment build up) across selected European coastlines in 2004



Turn over ►

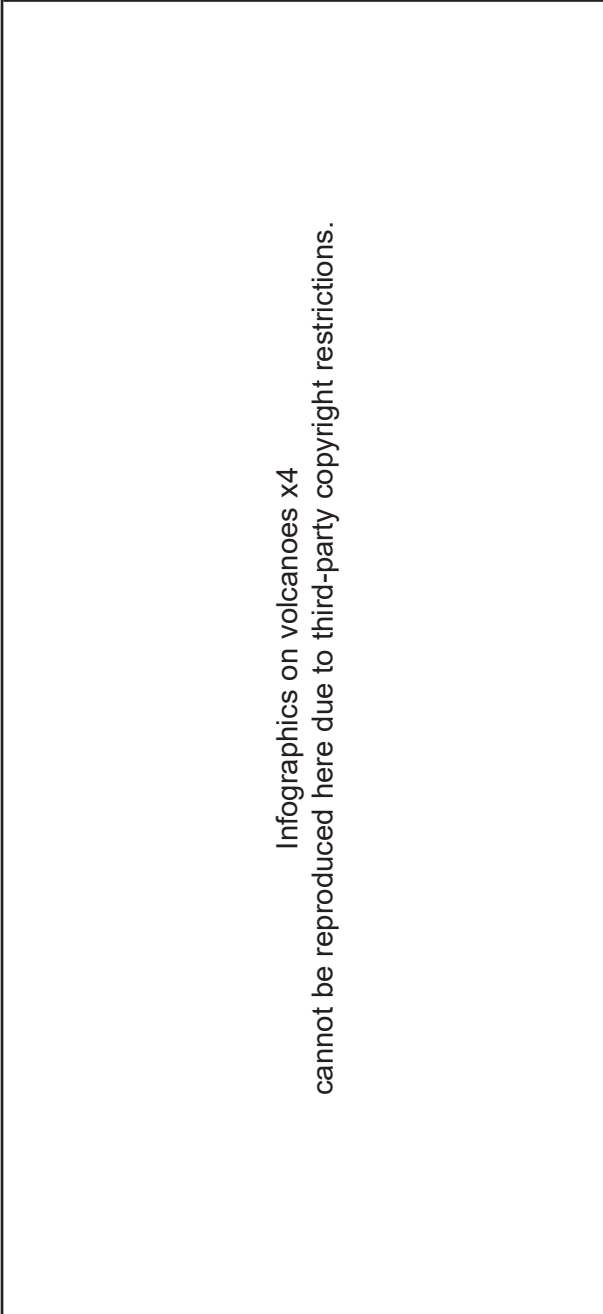
Figure 7

The surface velocity of various glaciers, including Thwaites Glacier, Antarctica



Note: At the grounding line, glacier ice comes into contact with the sea and starts to float.

Figures 9a – 9d
Information about volcanic eruptions



Infographics on volcanoes x4
cannot be reproduced here due to third-party copyright restrictions.

Figure 10

Information about the 2010 earthquake in Haiti

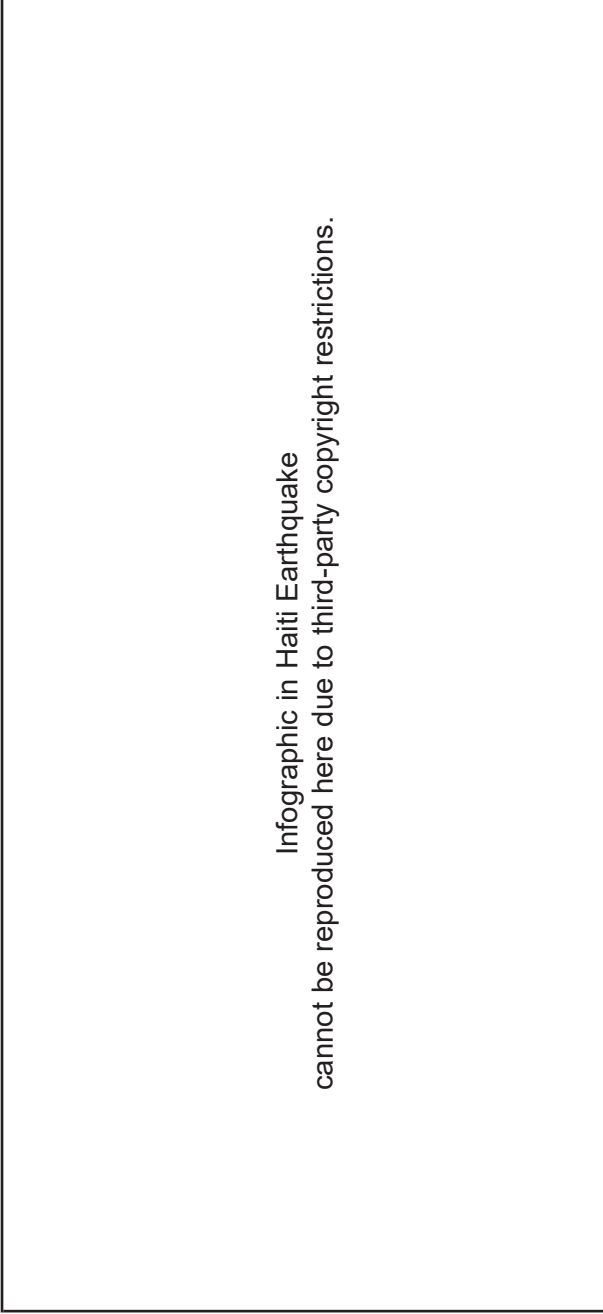


Figure 11

Selected climate extremes and impacts affecting coral and forests in tropical and sub-tropical regions

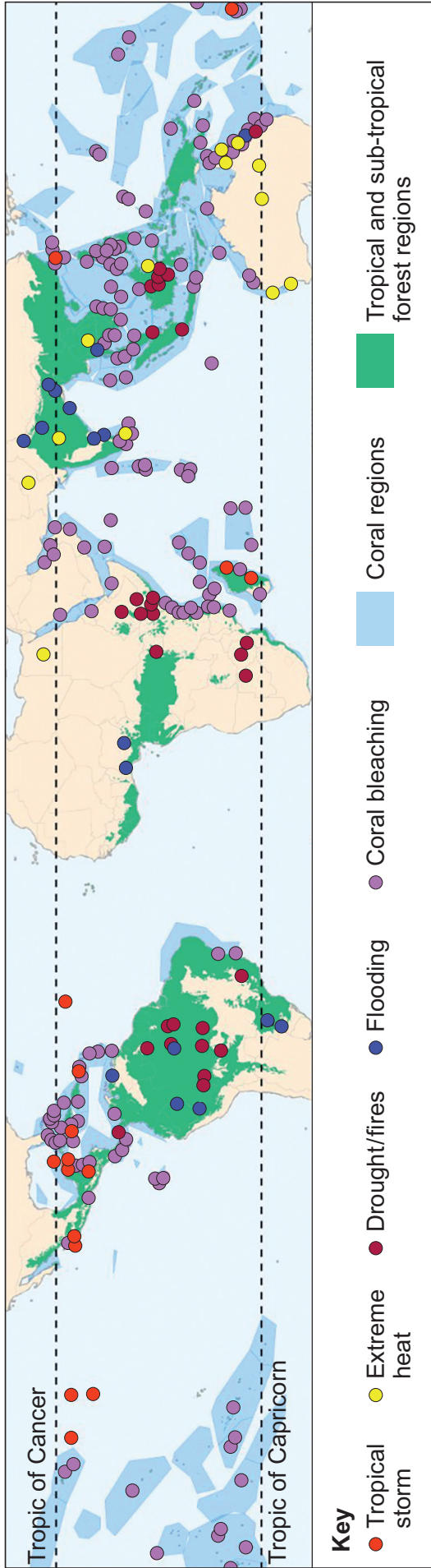


Figure 12

Information about coral reefs

Infographic on coral
cannot be reproduced here due to third-party copyright restrictions.

END OF SOURCES

There are no resources printed on this page

There are no resources printed on this page

Copyright information

For confidentiality purposes, all acknowledgements of third-party copyright material are published in a separate booklet. This booklet is published after each live examination series and is available for free download from www.aqa.org.uk.

Permission to reproduce all copyright material has been applied for. In some cases, efforts to contact copyright-holders may have been unsuccessful and AQA will be happy to rectify any omissions of acknowledgements. If you have any queries please contact the Copyright Team.

Copyright © 2021 AQA and its licensors. All rights reserved.

